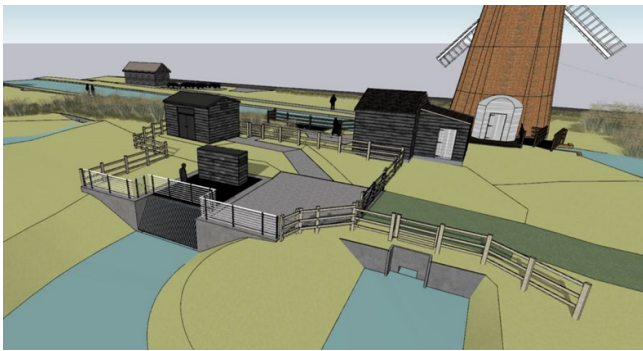


## About the project

The Upper Thurne Integrated Drainage Project will be replacing thirteen pumping stations within the River Thurne catchment.

The works will be delivered by BAM Nuttall who recently completed the Broadland Flood Alleviation Project.



*Above & left: Visual impressions of proposed replacement pumping station, Horsey.*

## What will we be doing?

We will be constructing new fish friendly pumping stations to manage water levels on the adjacent marshes, meadows and arable land, discharging through the flood embankments into the River Thurne.

The new pumps will be able to operate over a greater range of flows, with increased efficiency, maintaining stable water levels within the catchments and offering resilience to climate change.

Where possible the new pumping stations will be located at or adjacent to the existing pumping stations. Some stations require relocating locally due to site constraints.

## Why are we doing this work?

The pumping stations were mostly built in the 1950's to replace the historical wind pumps. These replacement stations were mostly steam or diesel driven pumps, later upgraded to electrical pumps within the same foundations / buildings. Whilst ongoing repairs have sustained their operation for 70 years the pumping stations are now significantly beyond the end of their design lives and require replacement.

Without the existing pumping stations and drainage network, the catchments would be subject to permanent flooding, causing the loss of important designated habitat, arable land, and woodland as well as impacting homes and local communities.



## How will this benefit you?

The pumping stations form an integral part of the flood defence infrastructure protecting people and property, utility infrastructure and important rural roads.

The new pumps will have increased capacity and resilience to climate change.

## CONTACT US

Water Management Alliance, Pierpoint House, 28 Horsley's Fields, King's Lynn, Norfolk, PE30 5DD | t: 01553 819600 | e: [info@wlma.org.uk](mailto:info@wlma.org.uk) | [www.wlma.org.uk](http://www.wlma.org.uk)

## FOLLOW US

  @WaterManagementAlliance

   @the\_WMA

## Where is this work happening?

The replacement pumping stations are located at Brograve, Stubb, Catfield, Horse Fen, Horsey, Martham, Heigham Holmes, Potter Heigham, Repps Staithe, Somerton North, Somerton South, St Benets, and Thurne.

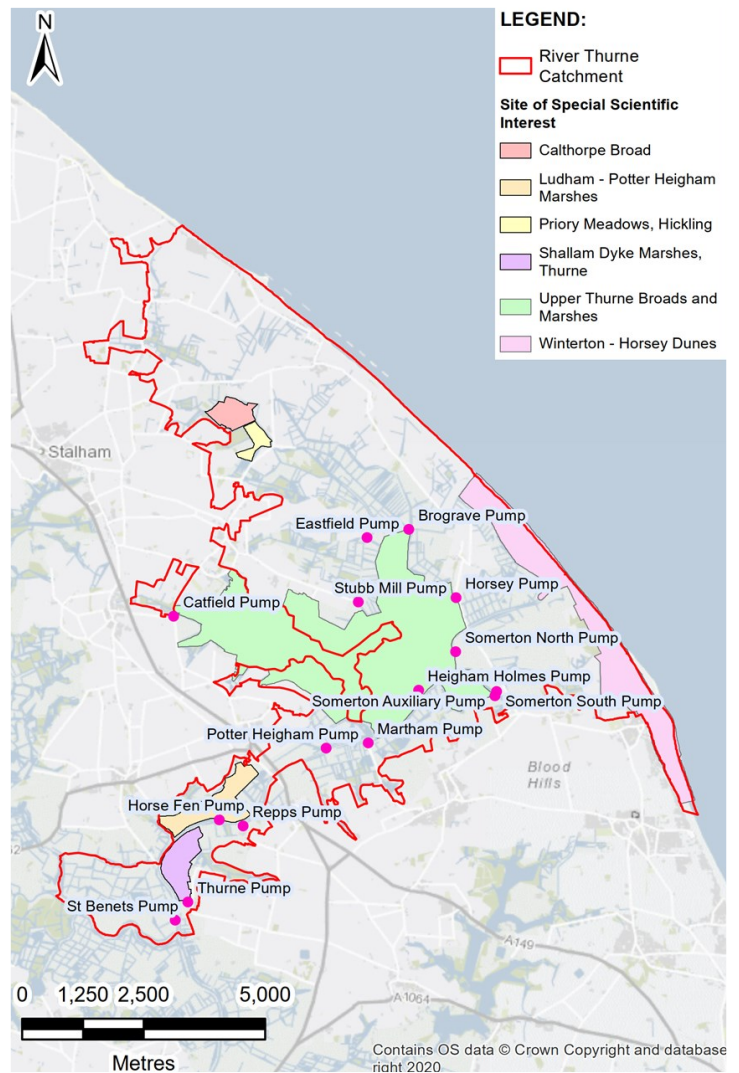
## When is this work happening?

The detailed design phase, due to be completed Summer 2024, is being developed in partnership with leading suppliers of highly efficient fish friendly pumps, mechanical / electrical plant and electronic control and monitoring systems specialists.

Ground investigation works, topographical surveys and environmental / habitat surveys were completed Summer 2023.

The main construction works are scheduled to commence in Spring 2025 with completion in Spring 2028. The pumping stations will be constructed in batches to minimise local impact and increase efficiencies.

We are working closely with landowners and key stakeholders to ensure the designs consider current and future needs with resilience and adaptability to climate change and future land use over the 50 year design life.



## How can you get involved or get in touch?

This information is to let you know about the vital work we are doing in your community. We are happy to come along to community groups and residential associations to explain more about the work.

Please contact us if you would like to discuss in more detail. We will keep you up to date with any further developments.

## Further information

From the Environment Agency:

<https://www.gov.uk/government/news/broadland-flood-alleviation-project-reaches-20-year-landmark>

From BAM Nuttall:

<https://www.bamnuttall.co.uk/news/broadland-flood-alleviation-landmark/>